

X-ray Product & Seal Inspection



Ensure that your products meet the highest levels of quality and safety

Anritsu's x-ray solution provides 100% closed-pack, end-of-line product inspection with real-time analysis, which facilitates immediate corrective action.

This system offers the following advantages:

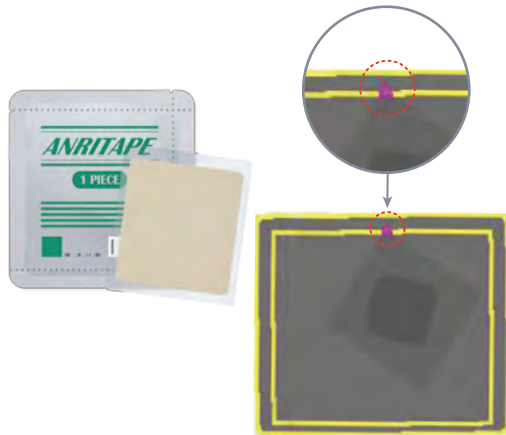
- Ensures correct product dosage by verifying product size and count.
- Detects contaminants down to 0.3 mm stainless steel.*
- Immediately identifies packaging problems.
- Verifies package sealing to prevent product deterioration.

*Application dependent

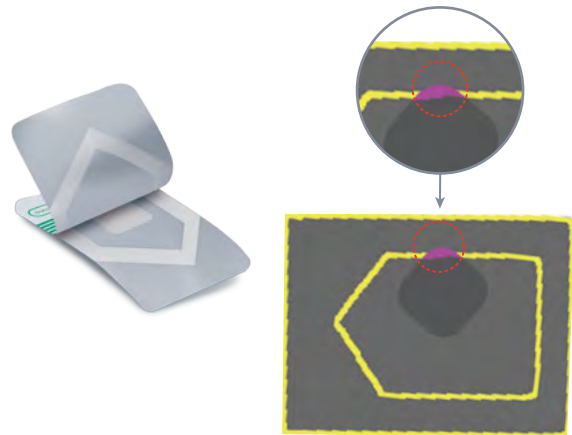
Product types

The x-ray solution can inspect a wide variety of products, including analgesic and nicotine patches, blister packs, and orally dissolving films.

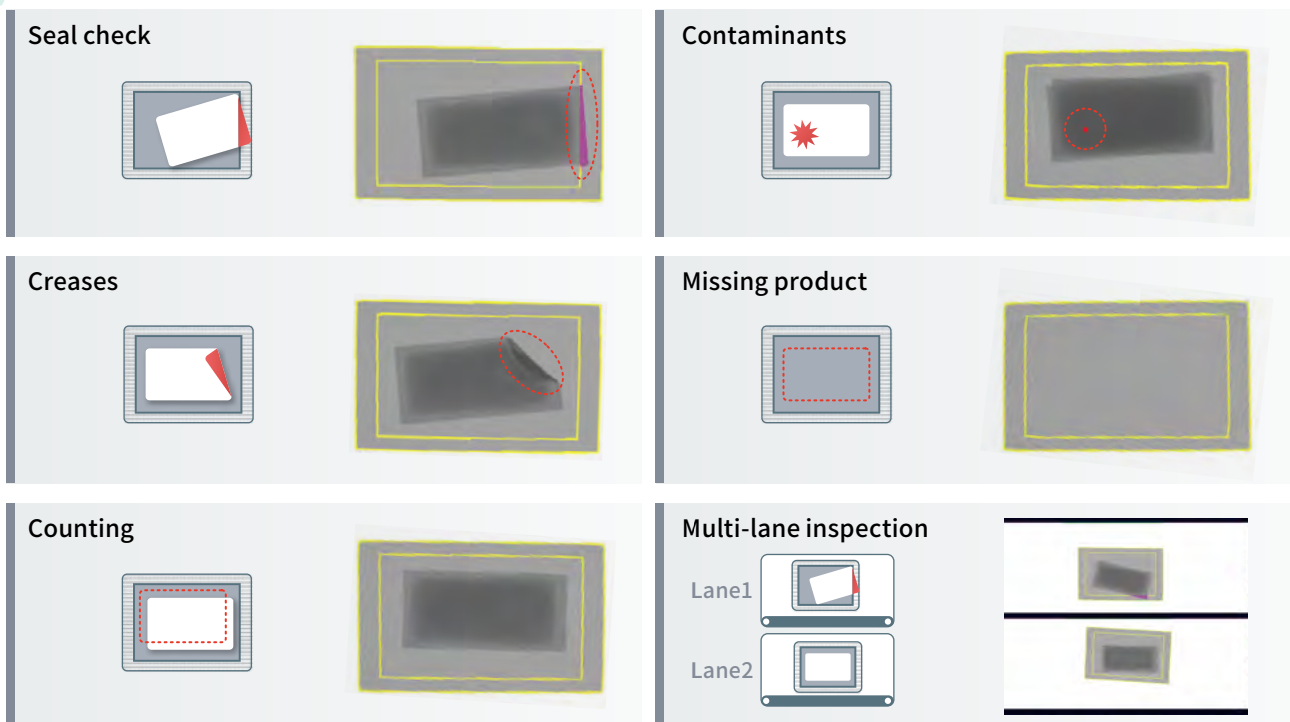
Patches & transdermal medications



Orally dissolving films



Inspection capability

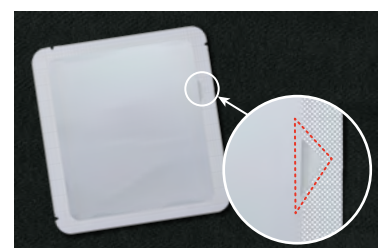


*Inspection accuracy varies depending on the thickness and shape of the product. Please consult with our sales representatives.

Why seal inspection is important

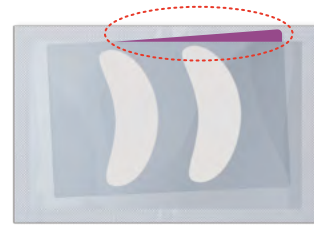
Finding and eliminating packages with product caught in seal areas is extremely important for the following reasons.

- Ensuring proper doses
- Preventing consumer complaints and recalls
- Preventing product deterioration
- Identifying packaging problems on the production line



Other applications

Package Check of the liner
(Transparent, opaque or metalized film— transparent shown)



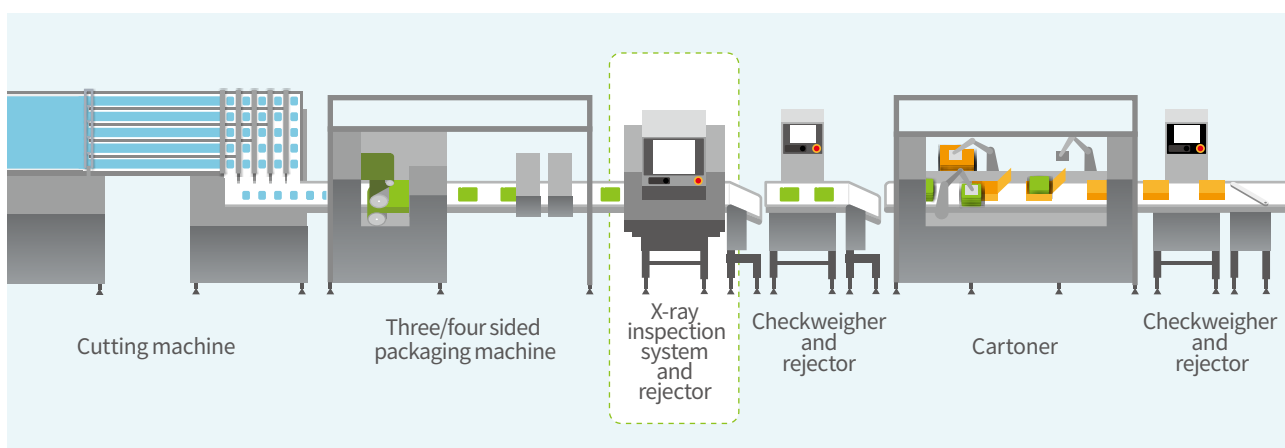
*Inspection accuracy varies depending on the thickness and shape of the product.
Please consult with our sales representatives.

Anritsu x-ray inspection advantages

- Prevent shipment of defective products, which protects brand reputation and earns customer trust.
- Inspect quality of all package types, including opaque packaging, which is not feasible with vision inspection.
- Perform multiple inspections simultaneously, including seal check, product integrity, and contaminant detection.
- Archive inspection images for analysis and for responding to inquiries from regulators, consumers, and business partners (requires optional QUICCA software).
- Reduce consumer complaints and minimize product waste by quickly identifying product quality issues.

Production line example (transdermal patch)

This is a conceptual diagram of a line that incorporates the X-ray inspection system after patch sealing and cutting. Defective products can be completely eliminated before accumulation and cartoning.



Test your products with Anritsu x-ray

Anritsu can test your products free of charge. We will provide a report with the test results, including x-ray images and contaminant detection sensitivity.

For more information, please contact your local Anritsu sales representative.



ANRITSU CORPORATION

5-1-1 Onna, Atsugi-shi, Kanagawa, 243-8555, JAPAN
TEL: +81-46-296-6699 FAX: +81-46-296-6786
<https://www.anritsu.com/infivis>

Anritsu Industrial Solutions (Shanghai) Co., Ltd.
Room 703-704, Sandhill Central, No.505 Zhangjiang Road, Pudong New Area, Shanghai 201210, P.R. China
TEL: +86-21-5046-3066

ANRITSU INFIVIS (THAILAND) CO., LTD.
700/678-679 Moo1, Amata City Chonburi Industrial Estate, Tambol Panthong, Amphur Panthong, Chonburi 20160 Thailand
TEL: +66 38-447180 FAX: +66 38-447182

ANRITSU INFIVIS B.V.
Grubbenvorsterweg 10 5928NX, Venlo, the Netherlands
TEL: +31(0)20-2254220

ANRITSU INFIVIS LTD.
Unit 3, Scott Road, Luton, LU3 3BF, United Kingdom
TEL: +44(0)845 539 9729

ANRITSU INFIVIS INC.
701 Innovation Drive, Elk Grove Village, IL 60007, U.S.A.
TEL: +1-847-419-9729 FAX: +1-847-537-8266

© ANRITSU CORPORATION 2023
ISO14001, ISO9001 Certified

- Some products shown in this catalog may not be available in your country or region. Contact our sales representatives for details.
- To ensure proper operation, read the Operation Manual before using the machine.
- In addition to daily inspection, a full maintenance inspection should be completed annually.

Specifications are subject to change without notice.
No part of this catalog may be reproduced without our permission.