

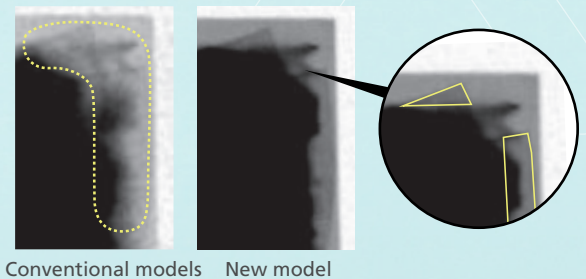


Pharmaceutical X-ray Inspection System

Internal inspection with X-ray is effective for the products packaged by opaque materials such as aluminum and is capable of various inspections to detect missing products, faulty sealing and shape integrity among others. Anritsu X-ray inspection system enables simultaneous and combined inspections, contributes to labor saving and quality improvement of your products, and eventually protects your product brand.

High sensitivity and high stability

The quality of X-ray transmission images is greatly improved and will suppress the work quality variation often sourced by visual or sensory inspection, and serve to stabilize your product quality.

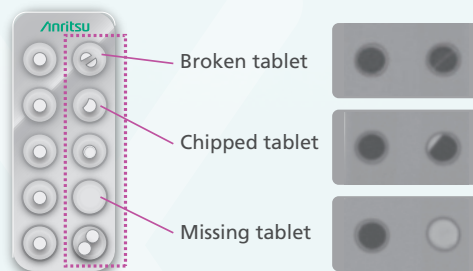


The system performs a variety of product integrity checks

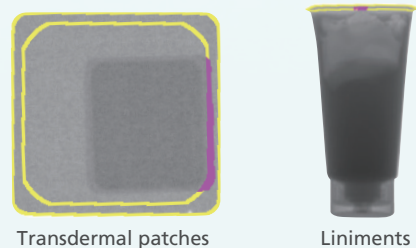
The Anritsu Pharmaceutical X-ray Inspection System provides not only contaminant detection but also product verification simultaneously.

The scanned images are savable and reviewable and serve for your quality improvement activity.

● Shape Inspection / Missing Product Detection



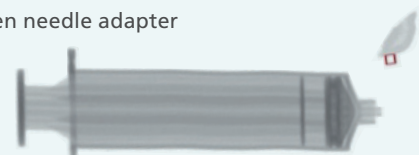
● Package Check



● Missing spray nozzle



● Broken needle adapter



Supporting FDA 21 CFR Part 11

Eligibility authentication (User management)

Access level can be individually set for each user to prevent unauthorized operations and potential operator mistakes.

Audit trail

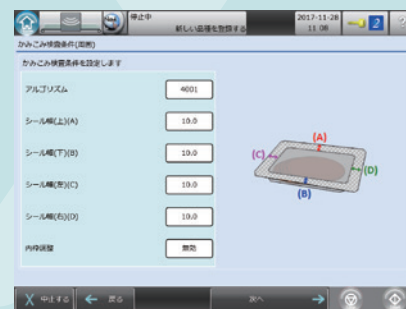
The history of operations and actions related to production, results of operation check are internally recorded. The data can be used to monitor fraudulent activity and analyze the cause of such activity.

Data encryption and decryption

Various data including statistical and parameter data from Audit trail can be easily transmitted.

Be X-ray Inspection your new normal

Preinstalled guidance illustrates the easy-to-set sensitivity and mitigates the operator's trouble and eliminates the downtime.



Safety in design

Anritsu believes customer safety is of utmost importance.

The Anritsu x-ray system incorporates seven safety design features to ensure safe operation.

<p>Emergency stop switch Cuts power to x-ray and drive circuits, stops the conveyor and x-ray radiation</p>		<p>X-ray irradiation display The lamp is lit during x-ray radiation</p>
<p>X-ray ON/OFF key Turning the key to OFF stops x-ray radiation completely</p>		<p>Leakage prevention curtain Prevents x-ray leakage</p>
<p>X-ray shield cover open/close sensor Opening the cover stops x-ray radiation completely</p>		<p>Hand insertion sensor Interrupting the sensor for a certain period of time stops x-ray radiation</p>
<p>X-ray shield cover Opened/Closed using x-ray irradiation ON/OFF key. Opening the cover stops x-ray radiation due to the x-ray shield cover open/close sensor</p>		

Safety of inspected products

It is your responsibility to check and ensure that you comply with all applicable laws and regulations of your country or region regarding the effect of x-ray exposure on pharmaceutical products. Anritsu conducted a research with the Nagoya City University about the effect of x-rays on the pharmaceutical quality of drug tablets and found that exposure to x-rays did not affect pharmaceutical quality of the drug content.

Anritsu Industrial Solutions Co., Ltd. (former company name) and Drug Delivery and Nano Pharmaceuticals, Graduate School of Pharmaceutical Sciences, Nagoya City University (Drug Development and Industrial Pharmacy, 2015; 41(6): 953-958).

The system is apt to our products?

What and how the image presents?

▶▶▶ Ask us for sample testing.

Our laboratory tests your samples, and reports you the results including images, sensitivity. The tested samples will substantiate the consequences of X-ray exposure on your product.

Specifications

Model	KXE7510DGEKE
Safety	X-ray leakage maximum 1.0 μ Sv/h or less, prevention of x-ray leakage by safety devices, lead-free shield curtains with a 10 mm clearance from the conveyor surface as standard

*Ask us for further details.

ANRITSU INFIVIS CO., LTD.

<https://www.anritsu.com/infivis>

5-1-1 Onna, Atsugi-shi, Kanagawa-Prf., 243-0032, JAPAN TEL: +81-46-296-6699

Solutions for pharmaceutical products: <https://www.anritsu.com/en-GB/infivis/products/solutions-for-pharma>

Contact us: <https://www.anritsu.com/en-GB/infivis/contact-us>

Edition: May 2020, AIP-0320011-00 ©ANRITSU INFIVIS. No part of this catalog may be reproduced without our permission.